



MAN - MEASUREMENT SUMMARY

Client

Jeneric Farms
1511 Cawongla Road
Larnook NSW 2480

Date Sample Taken -
Test No. JNF21025

Contact :- Micron Man
Our Phone (08)94181733
P.O. Box 1423
Bibra Lake W.A. 6965

Group ID. JFI

Wool Growth - 12 months

Age at Sample Date - months

TRAIT VARIATION SUMMARY

Trait	Average	Min	Max	More than 5% below Avg		+/- 5% around Avg		More than 5% above Avg	
FD (um)	24.84	18.3	37.5	13	46.4%	7	25.0%	8	28.6%
SD (um)	5.68	4.0	10.4	14	50.0%	6	21.4%	8	28.6%
CV %	22.69	18.3	29.9	11	39.3%	6	21.4%	11	39.3%
CE %	5.53	2.1	16.0	15	53.6%	5	17.9%	8	28.6%
FEM (um)	8.75	6.3	14.6	14	50.0%	5	17.9%	9	32.1%
CEM (um)	10.66	7.1	20.2	14	50.0%	7	25.0%	7	25.0%
SF (um)	24.60	18.4	37.1	13	46.4%	7	25.0%	8	28.6%
CURVE	15.57	11.3	22.7	14	50.0%	3	10.7%	11	39.3%
%>30	17.95	1.7	77.7	17	60.7%	5	17.9%	6	21.4%

GFW (Kg)
Yield %
CFW (Kg)
BWT (Kg)
SS (N/ctx)

2 results are at or below SD of 4.0 = 7.1%
24 results are at or below CV of 25% = 85.7%
6 results are at or below %>30 of 5% = 21.4%

MOB FIBRE DIAMETER BREAKDOWN

FD (um)	No of Samples	%	Total GFW	AVG GFW	Total CFW	AVG CFW	AVG BWT
<=20	3	10.7%					
21	2	7.1%					
22	2	7.1%					
23	5	17.9%					
24	4	14.3%					
25	3	10.7%					
26	3	10.7%					
27							
28	3	10.7%					
29							
>=30	3	10.7%					

TOTALS 28

MAN - MOB AVERAGE REPORT

Client OFDA2000 Calibration - Alpaca : Trim High ON - GCF @ 20 um : 0.6 um
Jeneric Farms
 1511 Cawongla Road
 Larnook NSW 2480
Group ID. JFI

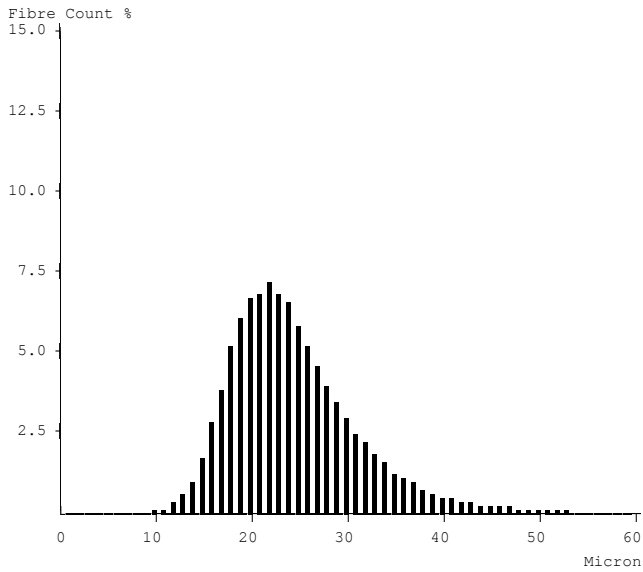
Contact :- Micron Man
 Our Phone (08)94181733
 P.O. Box 1423
 Bibra Lake W.A. 6965

Date Sample Taken -
Test No. JNF21025

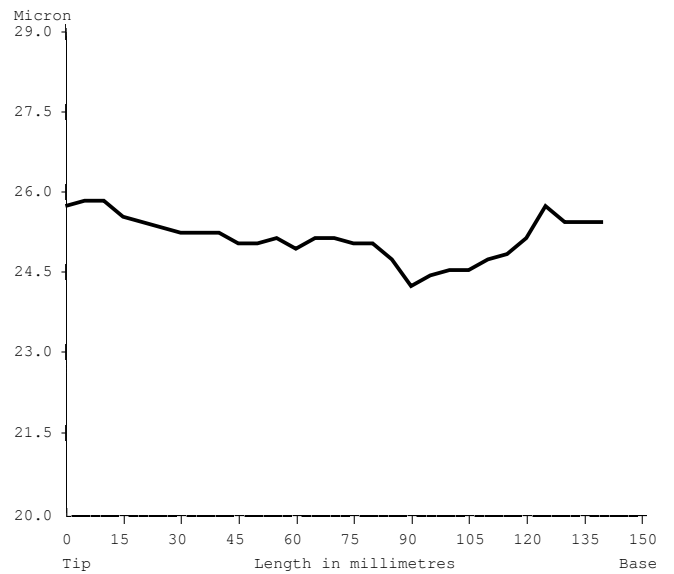
Wool Growth - 12 months

Age at Sample Date - months

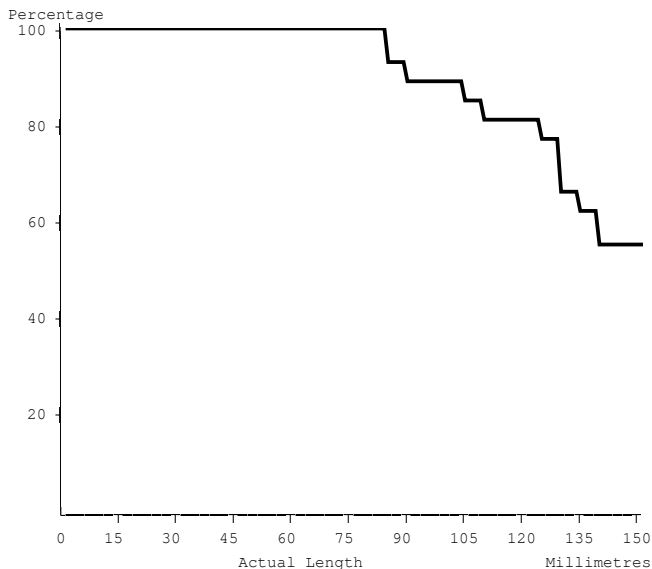
MOB AVERAGE MICRON HISTOGRAM



MOB AVERAGE MICRON PROFILE GRAPH



MOB AVERAGE LENGTH DISTRIBUTION



AVERAGE MOB DATA

Number of Samples : **28**
 Average Micron : **24.8 mic**
 Average CV : **22.7 %**
 Average SD : **5.7 mic**
 Average CF : **82.1 %**
 Average CE : **5.5 %**
 Average SF : **24.6 mic**
 Average CRV : **15.6 Dg/mm**
 Average SDC : **17.9 Dg/mm**
 Average Staple Length : **141.1 mm**
 Average Finest Point FT : **51.4 mm**
 Average Mean Fibre Ends : **25.9 mic**
 Average Minimum Fibre Dia : **23.4 mic**
 Average Maximum Fibre Dia : **28.0 mic**
 Average Skin Dia : **26.0 mic**
 Average Skin CV : **26.9 %**



- EARTAG SORTED REPORT

Client
 Jeneric Farms
 1511 Cawongla Road
 Larnook NSW 2480

Date Sample Taken -

Contact :- Micron Man
 Our Phone (08)94181733
 P.O. Box 1423
 Bibra Lake W.A. 6965

Test No. JNF21025

Group ID. JFI

Wool Growth - 12 months

Age at Sample Date - months

Alpaca Eartag		MIC Rank	MIC AVG	MIC DEV	SD Mic	CV %	SF Mic	CF %
Averages			24.8		5.7	22.7	24.6	82.1
ATHENA	250809	15	24.4	-0.4	5.7	23.4	24.3	86.1
AVATAR	250805	16	24.7	-0.1	6.3	25.5	25.0	82.1
BILLY	243433	21	26.2	+1.4	5.8	22.1	25.7	79.3
CHAMELEON	236414	14	23.9	-0.9	5.6	23.4	23.8	88.3
CINNAMON	236419	4	20.6	-4.2	4.7	22.8	20.4	95.2
DREAMBELL	250803	19	25.8	+1.0	5.6	21.7	25.3	82.3
EMMA TOO	236401	25	34.8	+10.0	10.4	29.9	36.9	41.8
FAIRYLIGHT	236418	13	23.7	-1.1	4.5	19.0	22.7	91.8
FLAVIA	169532	22	27.7	+2.9	6.6	23.8	27.6	73.4
GOLD DUST	250806	15	24.4	-0.4	5.3	21.7	23.9	87.9
JESSE	250801	8	22.6	-2.2	4.5	19.9	21.8	94.0
JUDY GIRL	250807	9	22.8	-2.0	4.5	19.7	21.9	93.8
KIRSTY	243432	23	28.0	+3.2	6.3	22.5	27.6	66.9
MICHOLITTA	157412	6	21.8	-3.0	4.0	18.3	20.8	96.4
MOON DUST	169527	18	25.1	+0.3	5.0	19.9	24.2	86.8
MR CHARMIN	215076	12	23.3	-1.5	5.1	21.9	22.9	89.7
ODETTE	236409	23	28.0	+3.2	7.6	27.1	28.8	68.7
ODIN	250808	11	23.2	-1.6	5.5	23.7	23.1	89.5
PETER PAN	236410	10	23.1	-1.7	5.0	21.6	22.6	90.4
PRINCESS A	250810	5	21.3	-3.5	4.1	19.2	20.4	96.5
RAINDROPS	236421	17	24.9	+0.1	5.8	23.3	24.7	85.1
ROSEWOOD	250804	3	20.1	-4.7	4.0	19.9	19.4	97.8
ROY PRINCE	250802	7	22.1	-2.7	5.2	23.5	22.0	92.1
ROYALDREAM	178382	20	25.9	+1.1	6.4	24.7	26.1	78.9
SPIRIT	250813	2	18.4	-6.4	4.8	26.1	18.8	97.9
WENDY	250812	1	18.3	-6.5	4.5	24.6	18.4	98.3
WICCA	176576	24	32.8	+8.0	7.6	23.2	32.6	44.2
WISHLIST	129882	26	37.5	+12.7	8.6	22.9	37.1	22.3



MICRON MAN - MICRON SORTED REPORT

Client
 Jeneric Farms
 1511 Cawongla Road
 Larnook NSW 2480

OFDA2000 Calibration - Alpaca : Trim High ON - GCF @ 20 um : 0.6 um

Contact :- Micron Man
 Our Phone (08)94181733
 P.O. Box 1423
 Bibra Lake W.A. 6965

Date Sample Taken -
 Test No. JNF21025

Group ID. JFI

Wool Growth - 12 months

Age at Sample Date - months

Alpaca Eartag	MIC Rank	MIC AVG	MIC DEV	SD Mic	CV %	SF Mic	CF %
Averages		24.8		5.7	22.7	24.6	82.1
WENDY 250812	1	18.3	-6.5	4.5	24.6	18.4	98.3
SPIRIT 250813	2	18.4	-6.4	4.8	26.1	18.8	97.9
ROSEWOOD 250804	3	20.1	-4.7	4.0	19.9	19.4	97.8
CINNAMON 236419	4	20.6	-4.2	4.7	22.8	20.4	95.2
PRINCESS A 250810	5	21.3	-3.5	4.1	19.2	20.4	96.5
MICHOLITTA 157412	6	21.8	-3.0	4.0	18.3	20.8	96.4
ROY PRINCE 250802	7	22.1	-2.7	5.2	23.5	22.0	92.1
JESSE 250801	8	22.6	-2.2	4.5	19.9	21.8	94.0
JUDY GIRL 250807	9	22.8	-2.0	4.5	19.7	21.9	93.8
PETER PAN 236410	10	23.1	-1.7	5.0	21.6	22.6	90.4
ODIN 250808	11	23.2	-1.6	5.5	23.7	23.1	89.5
MR CHARMIN 215076	12	23.3	-1.5	5.1	21.9	22.9	89.7
FAIRYLIGHT 236418	13	23.7	-1.1	4.5	19.0	22.7	91.8
CHAMELEON 236414	14	23.9	-0.9	5.6	23.4	23.8	88.3
GOLD DUST 250806	15	24.4	-0.4	5.3	21.7	23.9	87.9
ATHENA 250809	15	24.4	-0.4	5.7	23.4	24.3	86.1
AVATAR 250805	16	24.7	-0.1	6.3	25.5	25.0	82.1
RAINDROPS 236421	17	24.9	+0.1	5.8	23.3	24.7	85.1
MOON DUST 169527	18	25.1	+0.3	5.0	19.9	24.2	86.8
DREAMBELL 250803	19	25.8	+1.0	5.6	21.7	25.3	82.3
ROYALDREAM 178382	20	25.9	+1.1	6.4	24.7	26.1	78.9
BILLY 243433	21	26.2	+1.4	5.8	22.1	25.7	79.3
FLAVIA 169532	22	27.7	+2.9	6.6	23.8	27.6	73.4
ODETTE 236409	23	28.0	+3.2	7.6	27.1	28.8	68.7
KIRSTY 243432	23	28.0	+3.2	6.3	22.5	27.6	66.9
WICCA 176576	24	32.8	+8.0	7.6	23.2	32.6	44.2
EMMA TOO 236401	25	34.8	+10.0	10.4	29.9	36.9	41.8
WISHLIST 129882	26	37.5	+12.7	8.6	22.9	37.1	22.3

MICRON MAN - IAR SORTED ALPACA OFDA 2000 REPORT

Client

Jeneric Farms
1511 Cawongla Road
Larnook NSW 2480

Test Number - JNF21025
Group ID. - JFI
Wool Growth - 12 months

Date Sample Taken -

Age at Sample Date - months

Contact :- Micron Man
Our Phone (08)94181733
P.O. Box 1423
Bibra Lake W.A. 6965

Alpaca Eartag	MIC Rank	MIC AVG	MIC DEV	SD Mic	CV %	SL mm	Skin Mic	Skin CV	FPFT mm	MFE Mic	CE %	CF %	<15 %	SDA Mic	CRV Dg/mm	SDC Dg/mm	>30 %	Bulk cc/gm
Averages		24.8		5.7	22.7	141.1	26.0	26.9	51.4	25.9	5.5	82.1	2.5	1.2	15.6	17.9	17.9	0.0
129882	26	37.5	+12.7	8.6	22.9	85.0	38.3	23.5	0.0	37.7	11.6	22.3	0.0	1.1	11.9	12.5	77.7	0.0
157412	6	21.8	-3.0	4.0	18.3	85.0	22.5	21.8	55.0	22.7	2.3	96.4	1.3	0.7	17.1	19.7	3.6	0.0
169527	18	25.1	+0.3	5.0	19.9	110.0	26.4	25.0	55.0	26.7	4.0	86.8	0.1	1.1	14.0	16.0	13.2	0.0
169532	22	27.7	+2.9	6.6	23.8	130.0	29.0	32.4	95.0	29.5	7.3	73.4	0.7	0.9	13.4	16.3	26.6	0.0
176576	24	32.8	+8.0	7.6	23.2	90.0	32.8	24.4	15.0	32.3	10.2	44.2	0.1	1.0	11.4	13.3	55.8	0.0
178382	20	25.9	+1.1	6.4	24.7	105.0	25.6	28.1	45.0	26.1	7.5	78.9	0.2	1.0	14.5	15.7	21.1	0.0
215076	12	23.3	-1.5	5.1	21.9	125.0	23.5	26.4	100.0	24.5	4.2	89.7	1.1	0.9	17.7	19.9	10.3	0.0
236401	25	34.8	+10.0	10.4	29.9	140.0	33.9	31.6	90.0	35.0	16.0	41.8	0.1	1.8	11.3	11.4	58.2	0.0
236409	23	28.0	+3.2	7.6	27.1	140.0	28.2	30.5	50.0	28.7	8.8	68.7	0.2	1.0	12.5	13.2	31.3	0.0
236410	10	23.1	-1.7	5.0	21.6	130.0	24.8	25.8	25.0	24.2	3.9	90.4	1.1	1.2	15.3	17.6	9.6	0.0
236414	14	23.9	-0.9	5.6	23.4	160.0	24.8	34.7	65.0	27.5	6.0	88.3	0.8	2.0	15.1	15.9	11.7	0.0
236418	13	23.7	-1.1	4.5	19.0	130.0	23.2	24.1	120.0	24.2	3.0	91.8	0.4	0.7	13.7	16.4	8.2	0.0
236419	4	20.6	-4.2	4.7	22.8	155.0	22.5	32.0	90.0	21.4	4.3	95.2	4.8	0.8	18.1	21.3	4.8	0.0
236421	17	24.9	+0.1	5.8	23.3	135.0	25.5	24.3	0.0	24.0	6.4	85.1	0.7	1.6	12.8	14.5	14.9	0.0
243432	23	28.0	+3.2	6.3	22.5	160.0	28.4	23.2	20.0	28.4	4.6	66.9	0.2	0.9	13.4	14.9	33.1	0.0
243433	21	26.2	+1.4	5.8	22.1	150.0	28.1	28.8	35.0	28.0	5.2	79.3	0.5	1.1	12.9	16.2	20.7	0.0
250801	8	22.6	-2.2	4.5	19.9	160.0	24.0	22.1	60.0	24.2	3.2	94.0	0.7	1.0	19.0	22.0	6.0	0.0
250802	7	22.1	-2.7	5.2	23.5	160.0	24.0	27.5	70.0	23.7	5.3	92.1	3.0	1.0	16.9	19.7	7.9	0.0
250803	19	25.8	+1.0	5.6	21.7	160.0	25.5	28.2	155.0	27.1	4.5	82.3	1.1	1.1	12.9	15.7	17.7	0.0
250804	3	20.1	-4.7	4.0	19.9	160.0	21.3	23.9	30.0	21.1	2.1	97.8	4.5	0.8	21.0	24.1	2.2	0.0
250805	16	24.7	-0.1	6.3	25.5	160.0	24.0	27.1	50.0	24.7	7.7	82.1	0.8	1.2	14.3	16.5	17.9	0.0
250806	15	24.4	-0.4	5.3	21.7	160.0	26.8	27.6	65.0	26.1	4.2	87.9	0.7	1.4	14.5	19.7	12.1	0.0
250807	9	22.8	-2.0	4.5	19.7	160.0	23.0	23.5	10.0	22.9	3.0	93.8	1.3	0.9	17.6	19.7	6.2	0.0
250808	11	23.2	-1.6	5.5	23.7	160.0	28.0	28.6	60.0	26.9	5.3	89.5	1.6	2.2	16.8	20.8	10.5	0.0
250809	15	24.4	-0.4	5.7	23.4	160.0	27.0	30.4	30.0	25.5	5.6	86.1	1.2	1.1	15.0	15.7	13.9	0.0
250810	5	21.3	-3.5	4.1	19.2	160.0	22.9	18.3	15.0	22.2	2.5	96.5	2.5	1.4	18.7	20.9	3.5	0.0
250812	1	18.3	-6.5	4.5	24.6	160.0	20.8	31.7	35.0	19.5	2.6	98.3	19.8	1.2	22.7	27.8	1.7	0.0
250813	2	18.4	-6.4	4.8	26.1	160.0	22.1	27.6	0.0	19.0	3.6	97.9	21.8	1.7	21.6	23.6	2.1	0.0



MAN - SD CURVATURE REPORT

Client

Jeneric Farms
1511 Cawongla Road
Larnook NSW 2480

Date Sample Taken -
Test No. JNF21025

Wool Growth - 12 months

Contact :- Micron Man

Our Phone (08)94181733
P.O. Box 1423
Bibra Lake W.A. 6965

Group ID. JFI

Age at Sample Date - months

Eartag	SDC	Curve	Eartag	SDC	Curve	Eartag	SDC	Curve
236401	11.4	11.3						
129882	12.5	11.9						
236409	13.2	12.5						
176576	13.3	11.4						
236421	14.5	12.8						
243432	14.9	13.4						
178382	15.7	14.5						
250809	15.7	15.0						
250803	15.7	12.9						
236414	15.9	15.1						
169527	16.0	14.0						
243433	16.2	12.9						
169532	16.3	13.4						
236418	16.4	13.7						
250805	16.5	14.3						
236410	17.6	15.3						
157412	19.7	17.1						
250807	19.7	17.6						
250806	19.7	14.5						
250802	19.7	16.9						
215076	19.9	17.7						
250808	20.8	16.8						
250810	20.9	18.7						
236419	21.3	18.1						
250801	22.0	19.0						
250813	23.6	21.6						
250804	24.1	21.0						
250812	27.8	22.7						

