



MAN - MEASUREMENT SUMMARY

Client

Jeneric Farms
1511 Cawongla Road
Larnook NSW 2480

Date Sample Taken - 16/10/2020
Test No. JNF01102

Contact :- Micron Man
Our Phone (08)94181733
P.O. Box 1423
Bibra Lake W.A. 6965

Group ID. Full Group

Wool Growth - months

Age at Sample Date - months

TRAIT VARIATION SUMMARY

Trait	Average	Min	Max	More than 5% below Avg	+/- 5% around Avg	More than 5% above Avg
FD (um)	23.06	17.8	35.2	9 42.9%	4 19.0%	8 38.1%
SD (um)	5.29	4.1	8.7	11 52.4%	2 9.5%	8 38.1%
CV %	23.02	18.7	28.8	10 47.6%	1 4.8%	10 47.6%
CE %	4.62	1.6	12.1	11 52.4%	1 4.8%	9 42.9%
FEM (um)	8.39	6.7	12.1	9 42.9%	6 28.6%	6 28.6%
CEM (um)	9.82	7.0	17.0	11 52.4%	1 4.8%	9 42.9%
SF (um)	22.85	18.0	35.4	10 47.6%	3 14.3%	8 38.1%
CURVE	15.67	12.6	20.4	12 57.1%	1 4.8%	8 38.1%
%>30	12.42	0.9	67.2	12 57.1%	4 19.0%	5 23.8%

GFW (Kg)
Yield %
CFW (Kg)
BWT (Kg)
SS (N/ctx)

0 results are at or below SD of 4.0 = 0.0%
16 results are at or below CV of 25% = 76.2%
8 results are at or below %>30 of 5% = 38.1%

MOB FIBRE DIAMETER BREAKDOWN

FD (um)	No of Samples	%	Total GFW	AVG GFW	Total CFW	AVG CFW	AVG BWT
<=18	3	14.3%					
19	2	9.5%					
20	2	9.5%					
21	1	4.8%					
22	2	9.5%					
23	2	9.5%					
24	2	9.5%					
25	1	4.8%					
26	3	14.3%					
27	1	4.8%					
>=28	2	9.5%					

TOTALS 21

MAN - MOB AVERAGE REPORT

Client OFDA2000 Calibration - Alpaca : Trim High ON - GCF @ 20 um : 0.6 um
Jeneric Farms
 1511 Cawongla Road
 Larnook NSW 2480
Group ID. Full Group

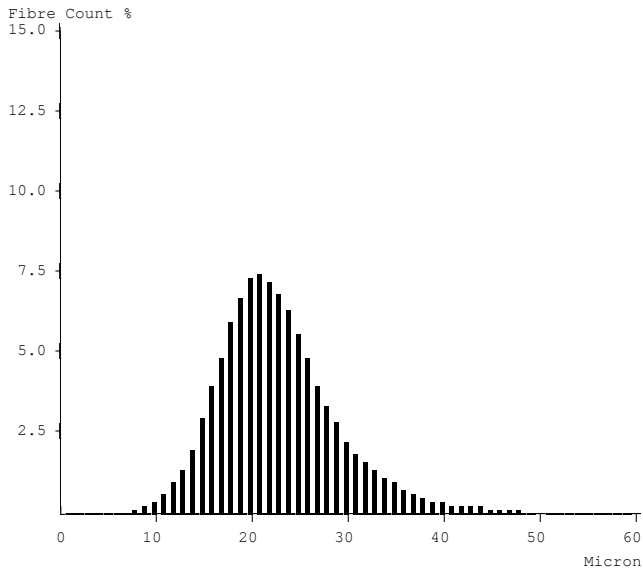
Contact :- Micron Man
 Our Phone (08)94181733
 P.O. Box 1423
 Bibra Lake W.A. 6965

Date Sample Taken - 16/10/2020
Test No. JNF01102

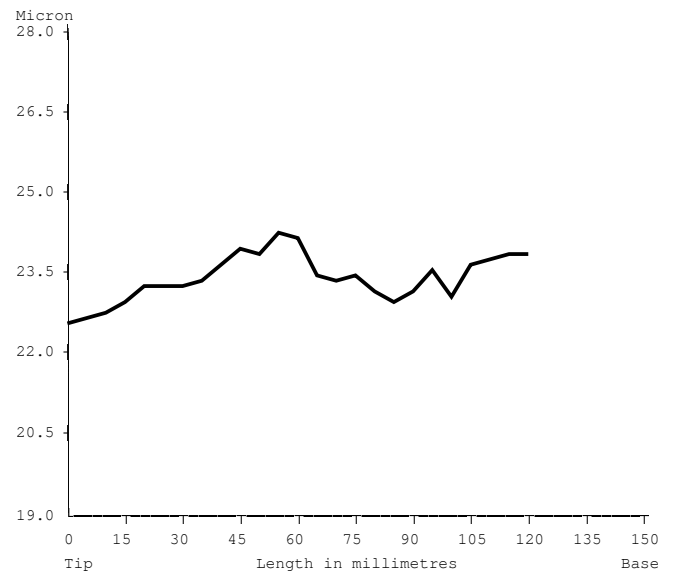
Wool Growth - months

Age at Sample Date - months

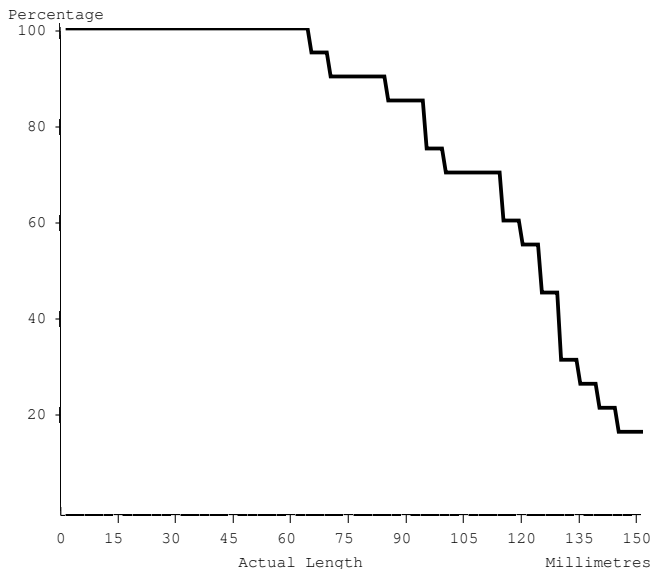
MOB AVERAGE MICRON HISTOGRAM



MOB AVERAGE MICRON PROFILE GRAPH



MOB AVERAGE LENGTH DISTRIBUTION



AVERAGE MOB DATA

Number of Samples : **21**
 Average Micron : **23.1 mic**
 Average CV : **23.0 %**
 Average SD : **5.3 mic**
 Average CF : **87.6 %**
 Average CE : **4.6 %**
 Average SF : **22.9 mic**
 Average CRV : **15.7 Dg/mm**
 Average SDC : **17.5 Dg/mm**
 Average Staple Length : **121.9 mm**
 Average Finest Point FT : **46.2 mm**
 Average Mean Fibre Ends : **23.5 mic**
 Average Minimum Fibre Dia : **21.4 mic**
 Average Maximum Fibre Dia : **25.8 mic**
 Average Skin Dia : **24.4 mic**
 Average Skin CV : **27.4 %**



MICRON MAN - EARTAG SORTED REPORT

Client OFDA2000 Calibration - Alpaca : Trim High ON - GCF @ 20 um : 0.6 um
 Jeneric Farms
 1511 Cawongla Road
 Larnook NSW 2480

Contact :- Micron Man
 Our Phone (08)94181733
 P.O. Box 1423
 Bibra Lake W.A. 6965

Date Sample Taken - 16/10/2020
 Test No. JNF01102

Group ID. Full Group

Wool Growth - months

Age at Sample Date - months

Alpaca Eartag	MIC Rank	MIC AVG	MIC DEV	SD Mic	CV %	SF Mic	CF %
Averages		23.1		5.3	23.0	22.9	87.6
ALEX	8	22.3	-0.8	5.6	25.1	22.5	90.4
AVATAR 250805	4	19.8	-3.3	5.7	28.8	20.7	94.4
CHAMELEON 236414	5	19.9	-3.2	4.1	20.6	19.3	97.6
DREAM BELL 250803	1	17.8	-5.3	4.5	25.3	18.0	99.1
EMMA 236401	10	23.0	-0.1	5.1	22.2	22.6	91.2
FAIRYLIGHTS 236418	7	22.0	-1.1	4.2	19.1	21.1	96.4
FLAVIA 169532	16	26.8	+3.7	6.4	23.9	26.8	76.5
GOLD DUST 250806	1	17.8	-5.3	4.8	27.0	18.3	98.5
HUMPHREY BOGART 215068	17	29.1	+6.0	7.0	24.1	29.1	65.4
JESSE 250801	3	19.1	-4.0	4.1	21.5	18.7	98.3
KAZURI 243430	14	25.7	+2.6	5.5	21.4	25.1	85.6
MICHOLITA 157412	9	22.7	-0.4	4.5	19.8	21.9	92.8
MOON DUST 169527	14	25.7	+2.6	5.8	22.6	25.4	83.5
MR CHARMING 215076	13	25.1	+2.0	4.7	18.7	24.0	88.3
ODETTES GIRL 236409	15	26.3	+3.2	5.9	22.4	25.9	77.4
PETER PAN 236410	6	21.0	-2.1	4.7	22.4	20.7	95.8
RAINDROPS 236421	11	23.8	+0.7	5.7	23.9	23.8	87.3
ROSEWOOD 250804	3	19.1	-4.0	4.6	24.1	19.1	97.6
ROYAL DREAM 178382	18	35.2	+12.1	8.7	24.7	35.4	32.8
ROYAL PRINCE 250802	2	17.9	-5.2	4.8	26.8	18.4	99.1
TINKER BELL 178373	12	24.1	+1.0	4.6	19.1	23.1	91.1



MICRON MAN - MICRON SORTED REPORT

Client OFDA2000 Calibration - Alpaca : Trim High ON - GCF @ 20 um : 0.6 um
 Jeneric Farms
 1511 Cawongla Road
 Larnook NSW 2480

Contact :- Micron Man
 Our Phone (08)94181733
 P.O. Box 1423
 Bibra Lake W.A. 6965

Date Sample Taken - 16/10/2020
 Test No. JNF01102

Group ID. Full Group

Wool Growth - months

Age at Sample Date - months

Alpaca Eartag	MIC Rank	MIC AVG	MIC DEV	SD Mic	CV %	SF Mic	CF %
Averages		23.1		5.3	23.0	22.9	87.6
DREAM BELL	250803	1 17.8	-5.3	4.5	25.3	18.0	99.1
GOLD DUST	250806	1 17.8	-5.3	4.8	27.0	18.3	98.5
ROYAL PRINCE	250802	2 17.9	-5.2	4.8	26.8	18.4	99.1
JESSE	250801	3 19.1	-4.0	4.1	21.5	18.7	98.3
ROSEWOOD	250804	3 19.1	-4.0	4.6	24.1	19.1	97.6
AVATAR	250805	4 19.8	-3.3	5.7	28.8	20.7	94.4
CHAMELEON	236414	5 19.9	-3.2	4.1	20.6	19.3	97.6
PETER PAN	236410	6 21.0	-2.1	4.7	22.4	20.7	95.8
FAIRYLIGHTS	236418	7 22.0	-1.1	4.2	19.1	21.1	96.4
ALEX		8 22.3	-0.8	5.6	25.1	22.5	90.4
MICHOLITA	157412	9 22.7	-0.4	4.5	19.8	21.9	92.8
EMMA	236401	10 23.0	-0.1	5.1	22.2	22.6	91.2
RAINDROPS	236421	11 23.8	+0.7	5.7	23.9	23.8	87.3
TINKER BELL	178373	12 24.1	+1.0	4.6	19.1	23.1	91.1
MR CHARMING	215076	13 25.1	+2.0	4.7	18.7	24.0	88.3
MOON DUST	169527	14 25.7	+2.6	5.8	22.6	25.4	83.5
KAZURI	243430	14 25.7	+2.6	5.5	21.4	25.1	85.6
ODETTES GIRL	236409	15 26.3	+3.2	5.9	22.4	25.9	77.4
FLAVIA	169532	16 26.8	+3.7	6.4	23.9	26.8	76.5
HUMPHREY BOGART	215068	17 29.1	+6.0	7.0	24.1	29.1	65.4
ROYAL DREAM	178382	18 35.2	+12.1	8.7	24.7	35.4	32.8



MAN - IAR SORTED ALPACA OFDA 2000 REPORT

Client

Jeneric Farms
1511 Cawongla Road
Larnook NSW 2480

Test Number - JNF01102
Group ID. - Full Group
Wool Growth - months

Date Sample Taken - 16/10/2020
Age at Sample Date - months

Contact :- Micron Man
Our Phone (08)94181733
P.O. Box 1423
Bibra Lake W.A. 6965

Alpaca Eartag	MIC Rank	MIC AVG	MIC DEV	SD Mic	CV %	SL mm	Skin Mic	Skin CV	FPFT mm	MFE Mic	CE %	CF %	<15 %	SDA Mic	CRV Dg/mm	SDC Dg/mm	>30 %	Bulk cc/gm
Averages		23.1	5.3	23.0	121.9	24.4	27.4	46.2	23.5	4.6	87.6	6.6	1.2	15.7	17.5	12.4	0.0	
157412	9	22.7	-0.4	4.5	19.8	22.8	21.9	50.0	23.3	3.9	92.8	0.5	0.7	16.5	21.0	7.2	0.0	
169527	14	25.7	+2.6	5.8	22.6	27.0	24.1	0.0	26.1	6.3	83.5	0.1	0.9	13.8	16.1	16.5	0.0	
169532	16	26.8	+3.7	6.4	23.9	27.9	25.4	75.0	27.4	6.8	76.5	1.0	0.9	13.1	15.9	23.5	0.0	
178373	12	24.1	+1.0	4.6	19.1	23.5	19.6	70.0	24.0	2.6	91.1	0.3	0.9	13.9	16.8	8.9	0.0	
178382	18	35.2	+12.1	8.7	24.7	36.4	25.8	35.0	36.2	12.1	32.8	0.0	0.9	12.6	13.7	67.2	0.0	
215068	17	29.1	+6.0	7.0	24.1	30.8	27.6	80.0	30.4	8.6	65.4	0.1	1.1	13.9	14.6	34.6	0.0	
215076	13	25.1	+2.0	4.7	18.7	26.8	29.5	60.0	26.8	3.7	88.3	0.2	1.0	14.7	15.5	11.7	0.0	
236401	10	23.0	-0.1	5.1	22.2	24.7	30.8	100.0	24.0	4.5	91.2	0.7	0.6	13.7	15.4	8.8	0.0	
236409	15	26.3	+3.2	5.9	22.4	28.5	26.7	0.0	27.0	6.0	77.4	0.3	1.2	14.3	16.3	22.6	0.0	
236410	6	21.0	-2.1	4.7	22.4	21.3	23.5	30.0	21.5	2.0	95.8	5.7	0.7	16.0	18.4	4.2	0.0	
236414	5	19.9	-3.2	4.1	20.6	20.7	27.1	90.0	20.7	2.5	97.6	6.8	0.8	17.5	21.0	2.4	0.0	
236418	7	22.0	-1.1	4.2	19.1	20.9	22.5	145.0	21.0	1.6	96.4	2.0	1.5	14.5	19.0	3.6	0.0	
236421	11	23.8	+0.7	5.7	23.9	25.5	30.2	0.0	24.1	5.5	87.3	2.1	1.4	13.8	17.3	12.7	0.0	
243430	14	25.7	+2.6	5.5	21.4	26.5	26.8	60.0	26.2	6.3	85.6	0.0	0.8	13.6	14.9	14.4	0.0	
250801	3	19.1	-4.0	4.1	21.5	20.6	20.4	5.0	19.0	2.3	98.3	11.9	1.4	18.1	20.3	1.7	0.0	
250802	2	17.9	-5.2	4.8	26.8	22.9	41.9	30.0	19.1	2.5	99.1	25.5	2.4	19.4	18.3	0.9	0.0	
250803	1	17.8	-5.3	4.5	25.3	18.9	25.4	0.0	16.5	2.1	99.1	24.0	2.1	17.2	18.6	0.9	0.0	
250804	3	19.1	-4.0	4.6	24.1	22.6	37.2	15.0	20.2	2.7	97.6	14.4	1.8	20.3	19.0	2.4	0.0	
250805	4	19.8	-3.3	5.7	28.8	23.1	37.2	0.0	20.4	5.8	94.4	16.0	2.0	18.1	16.7	5.6	0.0	
250806	1	17.8	-5.3	4.8	27.0	18.6	23.7	0.0	16.4	3.4	98.5	23.9	2.1	20.4	23.7	1.5	0.0	
ALEX	8	22.3	-0.8	5.6	25.1	22.1	28.1	125.0	22.5	5.8	90.4	4.1	0.6	13.7	14.4	9.6	0.0	



MAN - SD CURVATURE REPORT

Client

Jeneric Farms
1511 Cawongla Road
Larnook NSW 2480

Date Sample Taken - 16/10/2020
Test No. JNF01102

Contact :- Micron Man
Our Phone (08)94181733
P.O. Box 1423
Bibra Lake W.A. 6965

Group ID. Full Group

Wool Growth - months

Age at Sample Date - months

Eartag	SDC	Curve	Eartag	SDC	Curve	Eartag	SDC	Curve
178382	13.7	12.6						
ALEX	14.4	13.7						
215068	14.6	13.9						
243430	14.9	13.6						
236401	15.4	13.7						
215076	15.5	14.7						
169532	15.9	13.1						
169527	16.1	13.8						
236409	16.3	14.3						
250805	16.7	18.1						
178373	16.8	13.9						
236421	17.3	13.8						
250802	18.3	19.4						
236410	18.4	16.0						
250803	18.6	17.2						
250804	19.0	20.3						
236418	19.0	14.5						
250801	20.3	18.1						
157412	21.0	16.5						
236414	21.0	17.5						
250806	23.7	20.4						

