

# 2020 NATIONAL FLEECE CHALLENGE

Suri Junior - White

SURI FLEECE SCORE CARD

## JENERIC FARMS ROYAL PRINCE

# 9 STUD: JENERIC FARMS

CATEGORY	DESCRIPTION	POINTS	MAX
<b>FINENESS /ANNUALISED WEIGHT</b>	Average fibre diameter from multiple sites (as related to annualised weight from matrix).	23	30
<b>HANDLE</b>	Softness, independent of fineness.	4.5	5
<b>UNIFORMITY OF MICRON: Across entire fleece</b>	Across entire fleece (lacks variation).	7	10
<b>UNIFORMITY OF MICRON: Within the staple</b>	Within staple (lack of/low presence of guard hair).	7	10
<b>UNIFORMITY OF LENGTH</b>	Consistent length throughout.	4.5	5
<b>UNIFORMITY OF COLOUR</b>	Lack of colour contamination and variation within lock and across fleece.	5	5
<b>STYLE/DENSITY OF LOCK</b>	Well -defined lock formation and style, displaying solidity of lock	7.5	10
<b>LUSTRE</b>	Ability to reflect light.	10.5	15
<b>IMPURITIES</b>	Lack of tenderness and impurities such as coting, vegetable matter, dirt, seed, stain and tip damage etc.	4	5
<b>EFFECTIVE SKIRTING</b>	Effective removal of coarse fibre and other contaminants from around fleece presented.	3.5	5
PLACE: 3RD -1ST MVCF		<b>TOTAL</b>	<b>76.5</b>
			<b>100</b>



JUDGE: NATASHA CLARK

## MAN - ALPACA FIBRE ANALYSIS

**Client**

Australian Alpaca Assoc Ltd  
155 Foxgrove Road  
Canyonleigh NSW 2577

Date Sample Taken -

Test No. AUS01175

**Contact :- Micron Man**

Our Phone (08)94181733  
P.O. Box 1423  
Bibra Lake W.A. 6965

Group ID. Show Alpacas Trim High OFF

Wool Growth - months

Age at Sample Date - months

Lot No : **009**

IAR Number : 250802  
Micron Deviation : -1.3 um  
>30 : 4.5 %

Micron : 19.4 um  
SD : 6.4 um  
CV : 32.8 %  
CE : 5.0 %  
SF : 21.2 um  
CF : 95.5 %  
CRV : 20.4 Deg/mm  
SDC : 23.1 Deg/mm

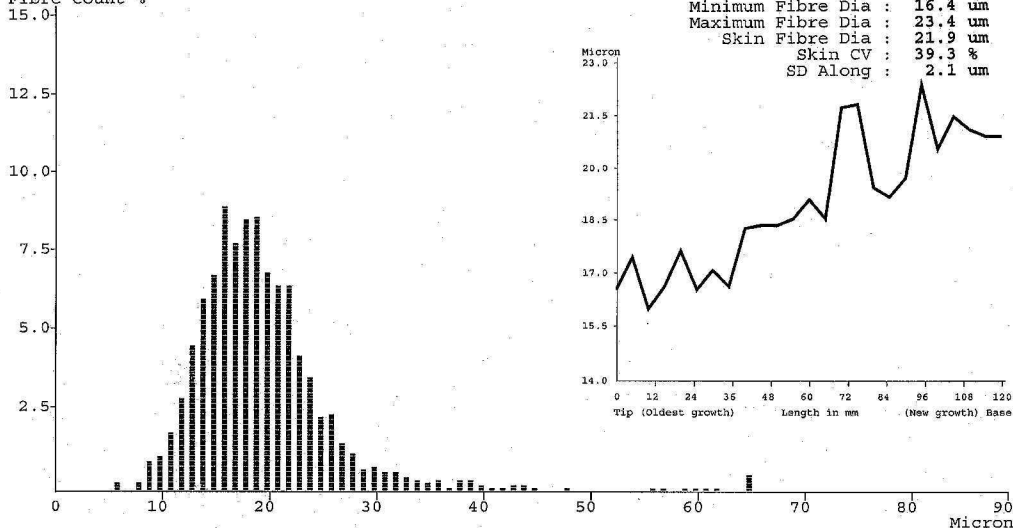
Total Fibres counted : 2175

OFDA2000 Alpaca Calibration : Trim High OFF  
GCF @ 20 um : 0.6 um

**Micron Profile Graph**

Staple Length : 120.0 mm  
Finest Point From Tip : 10.0 mm  
Mean Fibre Ends : 19.7 um  
Minimum Fibre Dia : 16.4 um  
Maximum Fibre Dia : 23.4 um  
Skin Fibre Dia : 21.9 um  
Skin CV : 39.3 %  
SD Along : 2.1 um

Fibre Count %



**EXPLANATION OF TERMS**

- FD : Overall average Fibre Diameter measured in micron (um).
- SD : Standard Deviation, measures the distance either side of the average fibre diameter where approx 2/3 of the fibre diameters lie.
- CV : Coefficient of Variation = SD as a percentage of the average micron
- CE : Coarse Edge. The percentage of fibres that lie over 10 microns greater than the average fibre diameter.
- CF : Comfort Factor. The percentage of fibres less than 30 microns
- SF : Spinning Fineness. Combine Micron & CV to a single number to represent the spinning quality expressed in microns.
- >30 : The percentage of fibres greater than 30 microns.
- CRV : Fibre Curvature is the average curvature or bending over one millimetre length.
- SDC : It is related to crimp frequency and is measured in degrees per millimetre (Dg/mm).
- SDC : Standard Deviation of Curvature is the variation of curvature for the above measurement.
- SDC is related to crimp definition and measured in degrees per millimetre (Dg/mm).
- TRIM : If sample is tested with Trim High ON, then the result is trimmed to 4 SD's above average FD.  
If sample average FD=22um and SD=5um then Trim High ON = 22+20=42um. Measurement above 44um is removed.  
Trim High OFF means no coarse tail trimming on the sample tested that gives a closer result to other instruments.
- GCF : Grease Correction Factor is the FD adjustment needed when measuring greasy Alpaca fibre - @ 20um-0.6um = 19.4um

# 2020 NATIONAL FLEECE CHALLENGE

Suri Junior - White

SURI FLEECE SCORE CARD

## JENERIC FARMS ROSEWOOD

# 10 STUD: JENERIC FARMS

CATEGORY	DESCRIPTION	POINTS	MAX
<b>FINENESS /ANNUALISED WEIGHT</b>	Average fibre diameter from multiple sites (as related to annualised weight from matrix).	18	30
<b>HANDLE</b>	Softness, independent of fineness.	5	5
<b>UNIFORMITY OF MICRON: Across entire fleece</b>	Across entire fleece (lacks variation).	7.5	10
<b>UNIFORMITY OF MICRON: Within the staple</b>	Within staple (lack of/low presence of guard hair).	7.5	10
<b>UNIFORMITY OF LENGTH</b>	Consistent length throughout.	4.5	5
<b>UNIFORMITY OF COLOUR</b>	Lack of colour contamination and variation within lock and across fleece.	5	5
<b>STYLE/DENSITY OF LOCK</b>	Well -defined lock formation and style, displaying solidity of lock	8	10
<b>LUSTRE</b>	Ability to reflect light.	12	15
<b>IMPURITIES</b>	Lack of tenderness and impurities such as coating, vegetable matter, dirt, seed, stain and tip damage etc.	3.5	5
<b>EFFECTIVE SKIRTING</b>	Effective removal of coarse fibre and other contaminants from around fleeces presented.	4.5	5
PLACE: 4TH - 2ND MVCF		<b>TOTAL</b>	<b>75.5</b>
			<b>100</b>



JUDGE: NATASHA CLARK

# MICRON MAN

Test Date - 25/11/2020

Page < 9 >

## MAN - ALPACA FIBRE ANALYSIS

Client

Australian Alpaca Assoc Ltd  
155 Foxgrove Road  
Canyonleigh NSW 2577

Date Sample Taken -

Test No. AUS01175

Contact - Micron Man

Our Phone (08)94181733  
P.O. Box 1423  
Bibra Lake W.A. 6965

Group ID. Show Alpacas Trim High OFF

Wool Growth - months

Age at Sample Date - months

Lot No : **010**

IAR Number : 250804  
Micron Deviation : -0.9  $\mu$ m  
>30 : 4.8 %

Micron : 19.8  $\mu$ m  
SD : 7.4  $\mu$ m  
CV : 37.5 %  
CE : 4.9 %  
SF : 22.8  $\mu$ m  
CF : 95.2 %  
CRV : 21.5 Deg/mm  
SDC : 23.4 Deg/mm

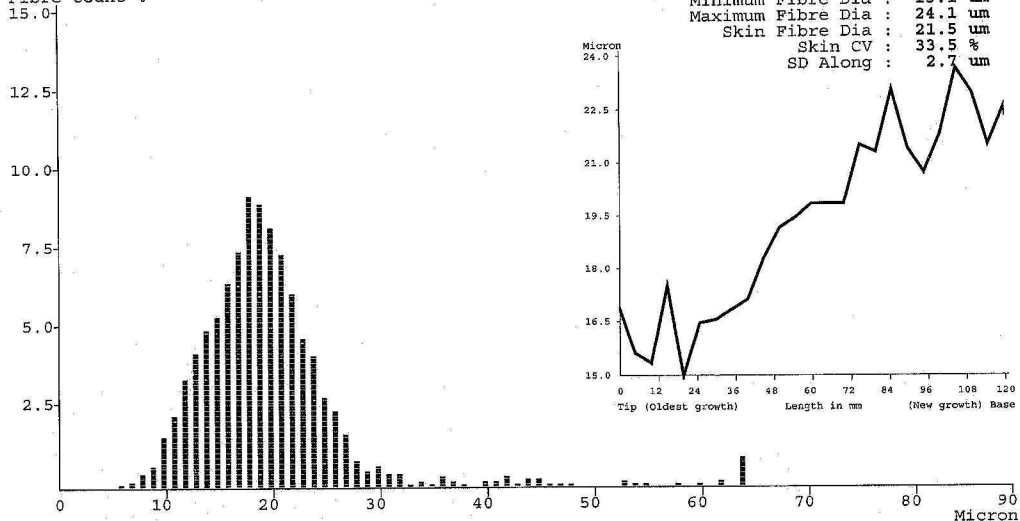
Total Fibres counted : 2548

OFDA2000 Alpaca Calibration : Trim High OFF  
GCF @ 20  $\mu$ m : 0.6  $\mu$ m

**Micron Profile Graph**

Staple Length : 130.0 mm  
Finest Point From Tip : 20.0 mm  
Mean Fibre Ends : 19.0  $\mu$ m  
Minimum Fibre Dia : 15.1  $\mu$ m  
Maximum Fibre Dia : 24.1  $\mu$ m  
Skin Fibre Dia : 21.5  $\mu$ m  
Skin CV : 33.5 %  
SD Along : 2.7  $\mu$ m

Fibre Count %



**EXPLANATION OF TERMS**

- FD : Overall average Fibre Diameter measured in micron ( $\mu$ m).
- SD : Standard Deviation, measures the distance either side of the average fibre diameter where approx 2/3 of the fibre diameters lie.
- CV : Coefficient of Variation = SD as a percentage of the average micron
- CE : Coarse Edge. The percentage of fibres that lie over 10 microns greater than the average fibre diameter.
- CF : Comfort Factor. The percentage of fibres less than 30 microns
- SF : Spinning Fineness. Combine Micron & CV to a single number to represent the spinning quality expressed in microns.
- >30 : The percentage of fibres greater than 30 microns.
- CRV : Fibre Curvature is the average curvature or bending over one millimetre length. It is related to crimp frequency and is measured in degrees per millimetre (Dg/mm).
- SDC : Standard Deviation of Curvature is the variation of curvature for the above measurement. SDC is related to crimp definition and measured in degrees per millimetre (Dg/mm).
- TRIM : If sample is tested with Trim High ON, then the result is trimmed to 4 SD's above average FD. If sample average FD=22 $\mu$ m and SD=5 $\mu$ m then Trim High ON = 22+20=42 $\mu$ m. Measurement above 42 $\mu$ m is removed. Trim High OFF means no coarse tail trimming on the sample tested that gives a closer result to other instruments.
- GCF : Grease Correction Factor is the FD adjustment needed when measuring greasy Alpaca fibre - @ 20 $\mu$ m-0.6 $\mu$ m = 19.4 $\mu$ m

# 2020 NATIONAL FLEECE CHALLENGE

Suri Intermediate - Black

SURI FLEECE SCORE CARD

## KIANAWAH KAZURI

# 35 STUD: JENERIC FARMS

CATEGORY	DESCRIPTION	POINTS	MAX
<b>FINENESS/ANNUALISED WEIGHT</b>	Average fibre diameter from multiple sites (as related to annualised weight from matrix).	7	30
<b>HANDLE</b>	Softness, independent of fineness.	3	5
<b>UNIFORMITY OF MICRON: Across entire fleece</b>	Across entire fleece (lacks variation).	6.5	10
<b>UNIFORMITY OF MICRON: Within the staple</b>	Within staple (lack of/low presence of guard hair).	7	10
<b>UNIFORMITY OF LENGTH</b>	Consistent length throughout.	4.5	5
<b>UNIFORMITY OF COLOUR</b>	Lack of colour contamination and variation within lock and across fleece.	4	5
<b>STYLE/DENSITY OF LOCK</b>	Well-defined lock formation and style, displaying solidity of lock	6	10
<b>LUSTRE</b>	Ability to reflect light.	9	15
<b>IMPURITIES</b>	Lack of tenderness and impurities such as coating, vegetable matter, dirt, seed, stain and tip damage etc.	4	5
<b>EFFECTIVE SKIRTING</b>	Effective removal of coarse fibre and other contaminants from around fleece presented.	4	5
<b>PLACE: 2ND</b>		<b>TOTAL</b>	<b>55</b>
		<b>55</b>	<b>100</b>



JUDGE: NATASHA CLARK



# MAN - ALPACA FIBRE ANALYSIS

Client

Australian Alpaca Assoc Ltd  
155 Foxgrove Road  
Canyonleigh NSW 2577

Date Sample Taken -

Test No. AUS01175

Contact - Micron Man

Our Phone (08)94181733  
P.O. Box 1423  
Bibra Lake W.A. 6965

Group ID. Show Alpacas Trim High OFF

Wool Growth - months

Age at Sample Date - months

Lot No : **035**

IAR Number : 243430  
Micron Deviation : +2.8 um  
>30 : 8.3 %

Micron : 23.5 um  
SD : 6.2 um  
CV : 26.4 %  
CE : 5.5 %  
SF : 24.0 um  
CF : 91.7 %  
CRV : 18.4 Deg/mm  
SDC : 21.5 Deg/mm

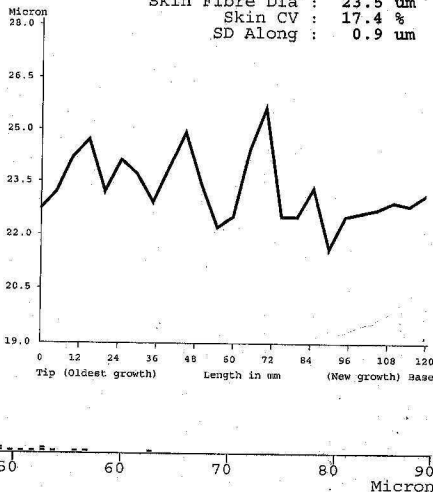
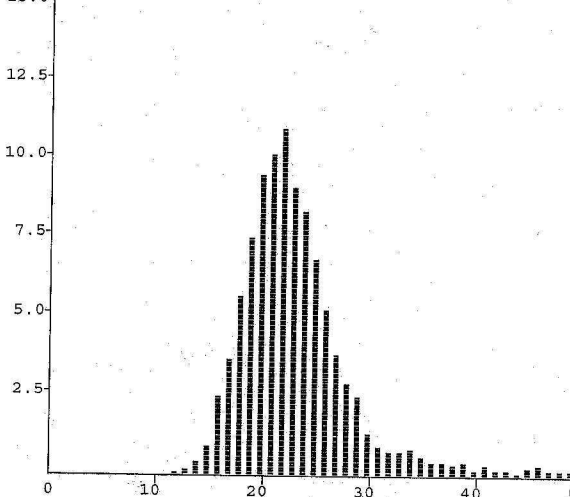
Total Fibres counted : 4410

OFDA2000 Alpaca Calibration : Trim High OFF  
GCF @ 20 um : 0.6 um

**Micron Profile Graph**

Staple Length : 155.0 mm  
Finest Point From Tip : 90.0 mm  
Mean Fibre Ends : 23.3 um  
Minimum Fibre Dia : 21.8 um  
Maximum Fibre Dia : 25.8 um  
Skin Fibre Dia : 23.5 um  
Skin CV : 17.4 %  
SD Along : 0.9 um

Fibre Count %



**EXPLANATION OF TERMS**

- FD : Overall average Fibre Diameter measured in micron (um).
- SD : Standard Deviation, measures the distance either side of the average fibre diameter where approx 2/3 of the fibre diameters lie.
- CV : Coefficient of Variation = SD as a percentage of the average micron
- CR : Coarse Edge. The percentage of fibres that lie over 10 microns greater than the average fibre diameter.
- SF : Spinning Fineness. Combine Micron & CV to a single number to represent the spinning quality expressed in microns.
- >30 : The percentage of fibres greater than 30 microns.
- CRV : Fibre Curvature is the average curvature or bending over one millimetre length. It is related to crimp frequency and is measured in degrees per millimetre (Dg/mm).
- SDC : Standard Deviation of Curvature is the variation of curvature for the above measurement. SDC is related to crimp definition and measured in degrees per millimetre (Dg/mm).
- TRIM : If sample is tested with Trim High ON, then the result is trimmed to 4 SD's above average FD. If sample average FD=22um and SD=5um then Trim High ON = 22+20=44um. Measurement above 44um is removed. Trim High OFF means no coarse tail trimming on the sample tested that gives a closer result to other instruments.
- GCF : Grease Correction Factor is the FD adjustment needed when measuring greasy Alpaca fibre - @ 20um-0.6um = 19.4um