



MAN - MEASUREMENT SUMMARY

Client

Jeneric Farms
1511 Cawongla Road
Larnook NSW 2480

Date Sample Taken - 10/10/2021
Test No. JNF11102

Contact :- Micron Man

Our Phone (08)94181733
P.O. Box 1423
Bibra Lake W.A. 6965

Group ID. JF1

Wool Growth - 12 months

Age at Sample Date - months

TRAIT VARIATION SUMMARY

Trait	Average	Min	Max	More than 5% below Avg		+/- 5% around Avg		More than 5% above Avg	
FD (um)	23.88	17.7	30.6	11	45.8%	1	4.2%	12	50.0%
SD (um)	5.49	3.7	8.8	12	50.0%	2	8.3%	10	41.7%
CV %	22.85	17.4	28.8	11	45.8%	3	12.5%	10	41.7%
CE %	5.31	1.7	12.7	12	50.0%	2	8.3%	10	41.7%
FEM (um)	8.47	6.1	12.7	10	41.7%	8	33.3%	6	25.0%
CEM (um)	10.23	6.5	17.7	12	50.0%	2	8.3%	10	41.7%
SF (um)	23.69	17.6	32.1	11	45.8%	3	12.5%	10	41.7%
CURVE	17.25	11.2	26.9	12	50.0%	3	12.5%	9	37.5%
%>30	14.67	0.6	44.9	11	45.8%	5	20.8%	8	33.3%

GFW (Kg)
Yield %
CFW (Kg)
BWT (Kg)
SS (N/ctx)

3 results are at or below SD of 4.0 = 12.5%
18 results are at or below CV of 25% = 75.0%
8 results are at or below %>30 of 5% = 33.3%

MOB FIBRE DIAMETER BREAKDOWN

FD (um)	No of Samples	%	Total GFW	AVG GFW	Total CFW	AVG CFW	AVG BWT
<=19	4	16.7%					
20	1	4.2%					
21	3	12.5%					
22	2	8.3%					
23	1	4.2%					
24	1	4.2%					
25	2	8.3%					
26	3	12.5%					
27	2	8.3%					
28	2	8.3%					
>=29	3	12.5%					

TOTALS 24

MAN - MOB AVERAGE REPORT

Client

Jeneric Farms
1511 Cawongla Road
Larnook NSW 2480

OFDA2000 Calibration - Alpaca : Trim High ON - GCF @ 20 um : 0.6 um

Date Sample Taken - 10/10/2021
Test No. JNF11102

Contact :- Micron Man

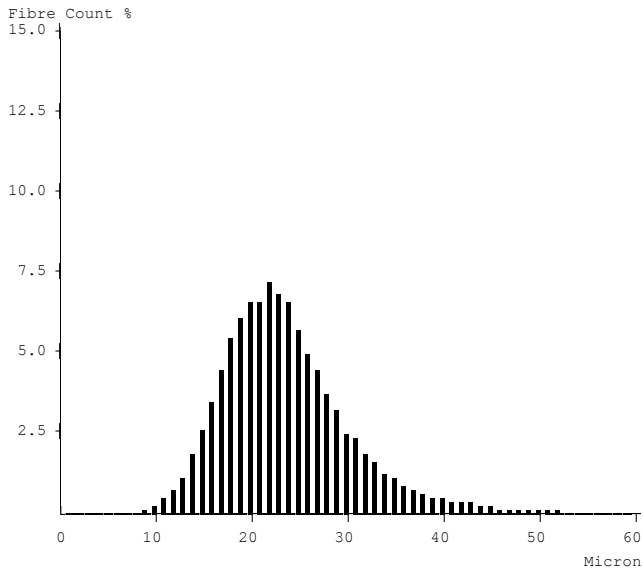
Our Phone (08)94181733
P.O. Box 1423
Bibra Lake W.A. 6965

Group ID. JF1

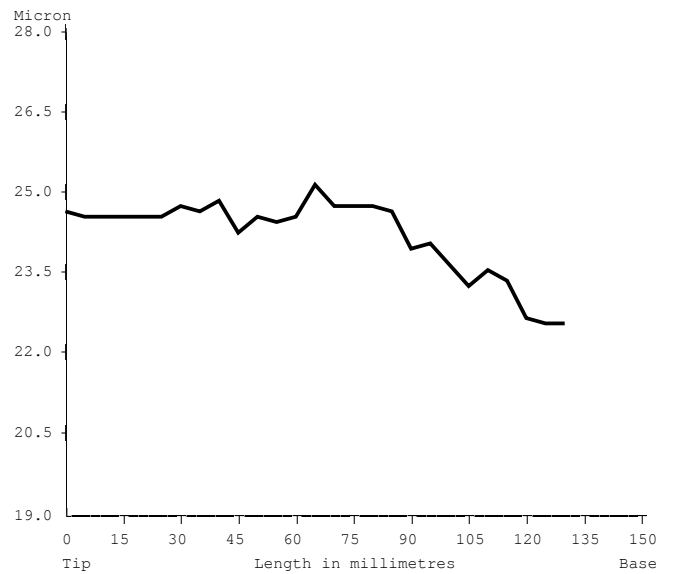
Wool Growth - 12 months

Age at Sample Date - months

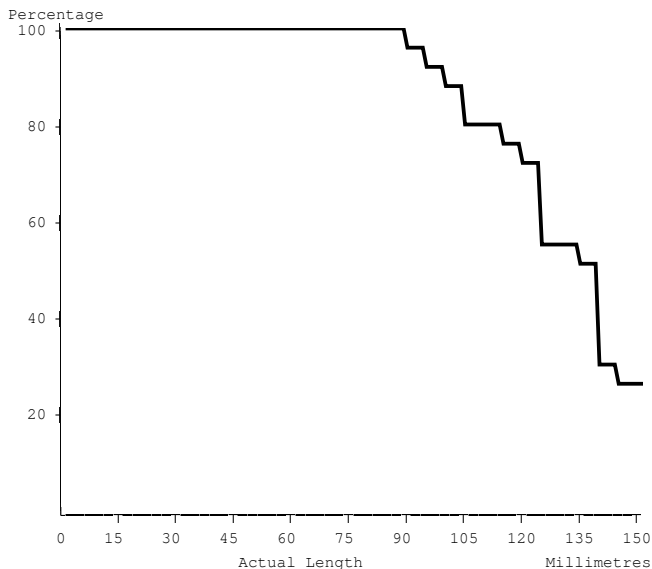
MOB AVERAGE MICRON HISTOGRAM



MOB AVERAGE MICRON PROFILE GRAPH



MOB AVERAGE LENGTH DISTRIBUTION



AVERAGE MOB DATA

Number of Samples : **24**
 Average Micron : **23.9 mic**
 Average CV : **22.8 %**
 Average SD : **5.5 mic**
 Average CF : **85.3 %**
 Average CE : **5.3 %**
 Average SF : **23.7 mic**
 Average CRV : **17.3 Dg/mm**
 Average SDC : **18.9 Dg/mm**
 Average Staple Length : **131.7 mm**
 Average Finest Point FT : **71.3 mm**
 Average Mean Fibre Ends : **24.3 mic**
 Average Minimum Fibre Dia : **22.3 mic**
 Average Maximum Fibre Dia : **26.9 mic**
 Average Skin Dia : **24.0 mic**
 Average Skin CV : **25.2 %**



MAN - EARTAG SORTED REPORT

Client
 Jeneric Farms
 1511 Cawongla Road
 Larnook NSW 2480

OFDA2000 Calibration - Alpaca : Trim High ON - GCF @ 20 um : 0.6 um

Contact :- Micron Man
 Our Phone (08)94181733
 P.O. Box 1423
 Bibra Lake W.A. 6965

Date Sample Taken - 10/10/2021
 Test No. JNF11102

Group ID. JF1

Wool Growth - 12 months

Age at Sample Date - months

Alpaca Eartag		MIC Rank	MIC AVG	MIC DEV	SD Mic	CV %	SF Mic	CF %
Averages			23.9		5.5	22.8	23.7	85.3
ALEX	500	22	30.5	+6.6	8.3	27.2	31.5	55.1
ATHENA	250809	2	18.1	-5.8	5.2	28.7	18.9	97.3
AUATAR	250805	11	22.5	-1.4	5.5	24.4	22.6	90.6
CHAMELEON	236414	12	23.9	+0.0	5.9	24.7	24.1	87.1
CINNAMON	236419	4	19.2	-4.7	4.9	25.5	19.5	96.3
DREAMBELL	250803	10	22.1	-1.8	4.5	20.4	21.4	94.9
EMMA	236401	14	25.4	+1.5	5.8	22.8	25.1	84.7
FAIRYLIGHTS	236418	18	26.6	+2.7	5.0	18.8	25.4	81.2
FLAVIA	169532	21	28.5	+4.6	6.7	23.5	28.4	67.4
GOLD DUST	250806	9	21.7	-2.2	4.6	21.2	21.2	94.9
JESSE	250801	8	21.4	-2.5	4.0	18.7	20.4	96.8
JUDYS GIRL	250807	1	17.7	-6.2	4.2	23.7	17.6	99.4
KAZURI	243430	20	28.4	+4.5	6.3	22.2	27.9	71.4
MICNOLITTA	157412	15	25.5	+1.6	5.9	23.1	25.3	81.7
MOONDUST	169527	23	30.6	+6.7	8.8	28.8	32.1	58.0
MR CHARMING	215076	17	26.5	+2.6	7.6	28.7	27.7	74.9
ODETTE	236409	19	28.3	+4.4	7.1	25.1	28.6	67.5
ODIN	250808	6	20.5	-3.4	4.5	22.0	20.1	97.8
PETER PAN	236410	7	20.7	-3.2	4.3	20.8	20.1	97.5
RAINDROPS	236421	13	25.1	+1.2	4.8	19.1	24.0	87.5
ROSEWOOD	250804	3	19.1	-4.8	3.7	19.4	18.3	99.1
ROYAL DREAM	178382	15	25.5	+1.6	5.8	22.7	25.2	83.3
ROYAL PRINCE	250802	5	19.6	-4.3	3.8	19.4	18.8	98.1
TINKERBELL	178373	16	25.8	+1.9	4.5	17.4	24.4	85.5



MICRON MAN - MICRON SORTED REPORT

Client
 Jeneric Farms
 1511 Cawongla Road
 Larnook NSW 2480

OFDA2000 Calibration - Alpaca : Trim High ON - GCF @ 20 um : 0.6 um

Contact :- Micron Man
 Our Phone (08)94181733
 P.O. Box 1423
 Bibra Lake W.A. 6965

Date Sample Taken - 10/10/2021
 Test No. JNF11102

Group ID. JF1

Wool Growth - 12 months

Age at Sample Date - months

Alpaca Eartag	MIC Rank	MIC AVG	MIC DEV	SD Mic	CV %	SF Mic	CF %
Averages		23.9		5.5	22.8	23.7	85.3
JUDYS GIRL	250807	1 17.7	-6.2	4.2	23.7	17.6	99.4
ATHENA	250809	2 18.1	-5.8	5.2	28.7	18.9	97.3
ROSEWOOD	250804	3 19.1	-4.8	3.7	19.4	18.3	99.1
CINNAMON	236419	4 19.2	-4.7	4.9	25.5	19.5	96.3
ROYAL PRINCE	250802	5 19.6	-4.3	3.8	19.4	18.8	98.1
ODIN	250808	6 20.5	-3.4	4.5	22.0	20.1	97.8
PETER PAN	236410	7 20.7	-3.2	4.3	20.8	20.1	97.5
JESSE	250801	8 21.4	-2.5	4.0	18.7	20.4	96.8
GOLD DUST	250806	9 21.7	-2.2	4.6	21.2	21.2	94.9
DREAMBELL	250803	10 22.1	-1.8	4.5	20.4	21.4	94.9
AUATAR	250805	11 22.5	-1.4	5.5	24.4	22.6	90.6
CHAMELEON	236414	12 23.9	+0.0	5.9	24.7	24.1	87.1
RAINDROPS	236421	13 25.1	+1.2	4.8	19.1	24.0	87.5
EMMA	236401	14 25.4	+1.5	5.8	22.8	25.1	84.7
MICNOLITTA	157412	15 25.5	+1.6	5.9	23.1	25.3	81.7
ROYAL DREAM	178382	15 25.5	+1.6	5.8	22.7	25.2	83.3
TINKERBELL	178373	16 25.8	+1.9	4.5	17.4	24.4	85.5
MR CHARMING	215076	17 26.5	+2.6	7.6	28.7	27.7	74.9
FAIRYLIGHTS	236418	18 26.6	+2.7	5.0	18.8	25.4	81.2
ODETTE	236409	19 28.3	+4.4	7.1	25.1	28.6	67.5
KAZURI	243430	20 28.4	+4.5	6.3	22.2	27.9	71.4
FLAVIA	169532	21 28.5	+4.6	6.7	23.5	28.4	67.4
ALEX	500	22 30.5	+6.6	8.3	27.2	31.5	55.1
MOONDUST	169527	23 30.6	+6.7	8.8	28.8	32.1	58.0

MAN - IAR SORTED ALPACA OFDA 2000 REPORT

Client

Jeneric Farms
1511 Cawongla Road
Larnook NSW 2480

Test Number - JNF11102
Group ID. - JF1
Wool Growth - 12 months

Date Sample Taken - 10/10/2021
Age at Sample Date - months

Contact :- Micron Man
Our Phone (08)94181733
P.O. Box 1423
Bibra Lake W.A. 6965

Alpaca Eartag	MIC Rank	MIC AVG	MIC DEV	SD Mic	CV %	SL mm	Skin Mic	Skin CV	FPFT mm	MFE Mic	CE %	CF %	<15 %	SDA Mic	CRV Dg/mm	SDC Dg/mm	>30 %	Bulk cc/gm
Averages		23.9		5.5	22.8	131.7	24.0	25.2	71.3	24.3	5.3	85.3	4.5	1.3	17.3	18.9	14.7	0.0
157412	15	25.5	+1.6	5.9	23.1	90.0	26.8	23.1	65.0	26.1	7.0	81.7	0.4	1.2	15.1	17.3	18.3	0.0
169527	23	30.6	+6.7	8.8	28.8	100.0	28.9	30.4	90.0	31.9	12.7	58.0	0.1	2.1	14.9	16.3	42.0	0.0
169532	21	28.5	+4.6	6.7	23.5	120.0	28.1	21.7	110.0	29.2	8.2	67.4	0.7	1.1	14.4	18.1	32.6	0.0
178373	16	25.8	+1.9	4.5	17.4	95.0	25.2	18.3	85.0	26.0	3.0	85.5	0.1	0.8	16.0	16.2	14.5	0.0
178382	15	25.5	+1.6	5.8	22.7	145.0	24.9	22.9	10.0	25.0	6.0	83.3	0.4	1.0	14.8	15.6	16.7	0.0
215076	17	26.5	+2.6	7.6	28.7	125.0	25.5	27.1	120.0	26.6	11.2	74.9	0.6	1.5	14.9	16.2	25.1	0.0
236401	14	25.4	+1.5	5.8	22.8	105.0	26.7	30.7	45.0	27.0	6.1	84.7	0.1	0.9	14.5	14.6	15.3	0.0
236409	19	28.3	+4.4	7.1	25.1	105.0	27.4	27.0	90.0	28.3	9.2	67.5	0.4	1.5	15.3	18.3	32.5	0.0
236410	7	20.7	-3.2	4.3	20.8	135.0	21.0	26.7	105.0	21.0	1.9	97.5	4.6	1.1	16.5	18.4	2.5	0.0
236414	12	23.9	+0.0	5.9	24.7	150.0	25.6	26.2	100.0	24.9	6.2	87.1	1.1	1.6	18.7	20.7	12.9	0.0
236418	18	26.6	+2.7	5.0	18.8	140.0	25.5	19.6	120.0	26.4	3.1	81.2	0.2	1.3	14.2	15.2	18.8	0.0
236419	4	19.2	-4.7	4.9	25.5	140.0	18.1	27.1	110.0	20.0	4.4	96.3	16.2	1.8	21.9	25.4	3.7	0.0
236421	13	25.1	+1.2	4.8	19.1	115.0	25.5	24.7	55.0	26.6	3.3	87.5	0.3	0.9	20.6	23.1	12.5	0.0
243430	20	28.4	+4.5	6.3	22.2	125.0	26.9	20.4	110.0	27.1	7.1	71.4	0.0	1.4	13.4	13.6	28.6	0.0
250801	8	21.4	-2.5	4.0	18.7	160.0	22.6	26.1	40.0	21.9	2.0	96.8	2.0	0.9	18.1	21.4	3.2	0.0
250802	5	19.6	-4.3	3.8	19.4	160.0	21.1	24.6	50.0	19.9	2.1	98.1	5.9	1.0	23.1	26.2	1.9	0.0
250803	10	22.1	-1.8	4.5	20.4	160.0	22.4	20.5	150.0	23.0	2.6	94.9	2.9	0.9	16.2	17.3	5.1	0.0
250804	3	19.1	-4.8	3.7	19.4	140.0	20.0	28.0	30.0	19.7	1.7	99.1	8.7	0.8	26.9	26.7	0.9	0.0
250805	11	22.5	-1.4	5.5	24.4	125.0	24.8	41.5	50.0	24.2	5.7	90.6	2.4	1.0	17.9	22.5	9.4	0.0
250806	9	21.7	-2.2	4.6	21.2	160.0	22.6	25.7	0.0	21.2	3.2	94.9	2.7	1.2	18.2	19.2	5.1	0.0
250807	1	17.7	-6.2	4.2	23.7	140.0	18.9	24.3	20.0	18.1	2.1	99.4	23.4	0.9	20.7	19.7	0.6	0.0
250808	6	20.5	-3.4	4.5	22.0	125.0	22.9	15.3	0.0	20.4	2.0	97.8	8.9	1.6	16.8	18.2	2.2	0.0
250809	2	18.1	-5.8	5.2	28.7	160.0	17.6	26.7	20.0	17.7	5.0	97.3	25.3	1.6	19.7	20.6	2.7	0.0
500	22	30.5	+6.6	8.3	27.2	140.0	28.0	25.0	135.0	31.0	11.7	55.1	0.5	1.9	11.2	11.8	44.9	0.0



MAN - SD CURVATURE REPORT

Client

Jeneric Farms
1511 Cawongla Road
Larnook NSW 2480

Date Sample Taken - 10/10/2021
Test No. JNF11102

Contact :- Micron Man
Our Phone (08)94181733
P.O. Box 1423
Bibra Lake W.A. 6965

Group ID. JF1

Wool Growth - 12 months

Age at Sample Date - months

Eartag	SDC	Curve	Eartag	SDC	Curve	Eartag	SDC	Curve
500	11.8	11.2						
243430	13.6	13.4						
236401	14.6	14.5						
236418	15.2	14.2						
178382	15.6	14.8						
178373	16.2	16.0						
215076	16.2	14.9						
169527	16.3	14.9						
157412	17.3	15.1						
250803	17.3	16.2						
169532	18.1	14.4						
250808	18.2	16.8						
236409	18.3	15.3						
236410	18.4	16.5						
250806	19.2	18.2						
250807	19.7	20.7						
250809	20.6	19.7						
236414	20.7	18.7						
250801	21.4	18.1						
250805	22.5	17.9						
236421	23.1	20.6						
236419	25.4	21.9						
250802	26.2	23.1						
250804	26.7	26.9						

